



## **Fact Sheet: Wellshire Golf Course Pilot Ski Course**

Starting winter 2013/14, groomed cross-country ski trails will be available **free to the public** at Wellshire Golf Course when golf operations are closed and there is sufficient natural snow to ski. This is made possible through a partnership with the [Denver Nordic Ski Association](http://www.skidenver.org) (Ski Denver), Denver Parks and Recreation and Denver Golf, with financial support from Devil's Thumb Ranch.

When enough snow falls, Ski Denver volunteers will groom about 3 kilometers of trails using Ski Denver equipment for the public to enjoy at no cost.

### **Project goals:**

- Provide groomed ski trails for free, public use
- Mitigate negative impacts of skiers who already ski at Wellshire Golf Course
- Encourage responsible, sustainable use of the course for skiing when conditions allow
- Minimize impacts to the surrounding neighborhood

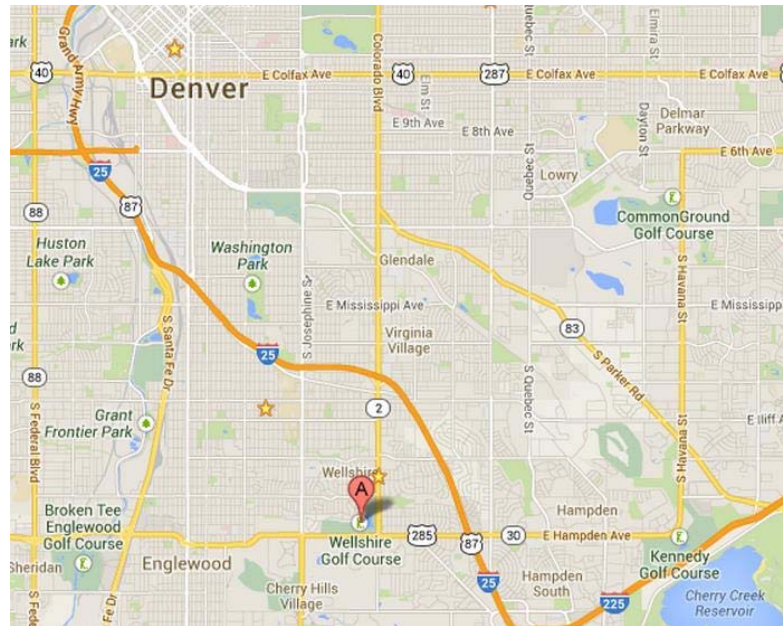
### **Ski Denver proposes to:**

- Groom approximately 3 kilometers of cross-country ski trails at Wellshire Golf Course, when golf operations are closed and there is sufficient natural snowfall to ski. Approved ski days would be determined by Denver Golf.
- Provide signage directing skiers to remain on approved trails and away from private property, and to stay off the golf course when the course is closed. This includes directing skiers to park only at the approved parking lot at Wellshire Golf Course clubhouse and not on streets near homes.
- Monitor the course to ensure rules are followed.
- Work closely with Denver Golf and local residents to ensure rules are followed, and adjust plans as needed to mitigate any negative impacts.

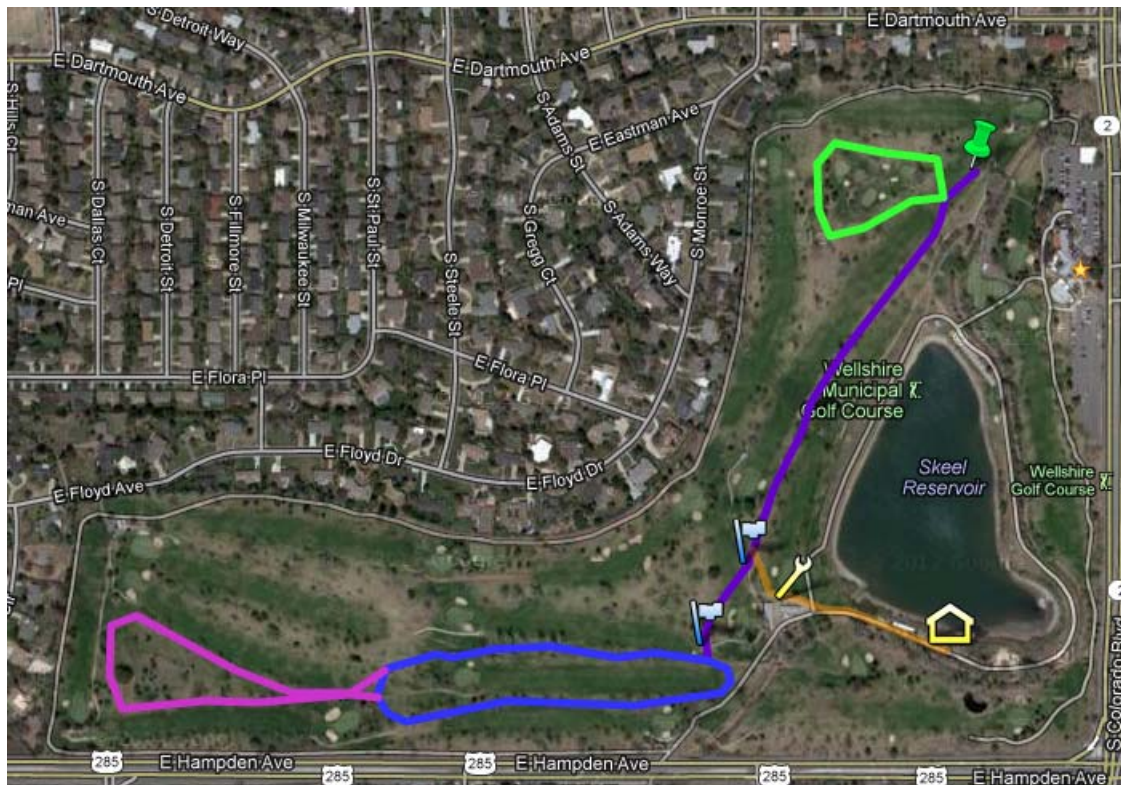
### **Rules for skiing:**

- Skiing is allowed during daylight hours (dawn to dusk) only when the course is marked "Open."
- Skiing is not allowed at night, or any time the course is marked "Closed."
- Skiers must access the course from the main entrance by parking at the clubhouse.
- Skiers must stay on the marked course and obey all signs.
- Absolutely no off course skiing allowed – stay off all golf greens and tee boxes.
- Snowshoes are allowed to walk adjacent to the marked course and are encouraged asked to stay off the groomed trail.
- Parking is only allowed in the north lot of the Wellshire Golf Course Clubhouse.
- Trespassing on private property is specifically prohibited. Respect the privacy of private property adjacent to the course.
- Pets and bikes are not allowed on the course.

## Located at Wellshire Golf Course



Approximately 3 kilometers of groomed skiing planned....



More info: [www.skidenver.org](http://www.skidenver.org)